



LM Technologies Ltd

Quick Start Guide LM506 Bluetooth v4.0 USB Adapter

© All rights reserved.

All trade names are registered trademarks of respective manufacturers listed.

The Bluetooth name and the Bluetooth trademarks are owned by Bluetooth SIG, Inc.

This manual may not be copied in any media or form without the written consent of original maker.

1 Package Contents

Retail Pack

- 1x LM506 Bluetooth USB Adapter
- 1 x Quick Start Guide
- 1 x CD with Widcomm Software

2 Welcome

Thank you for your purchase of the LM506 Bluetooth USB Adapter. Featuring Bluetooth wireless technology, LM506 Adapter creates cable-free connections between your PCs and other Bluetooth devices. LM506 USB Adapter supports Bluetooth 4.0 standard and is compatible with all Bluetooth certified devices.

3 Features

- Compliant with Bluetooth standard version 4.0
- Support for Microsoft Windows XP/ Vista and 7
- Easy operation and setting up
- Broadcom BCM20702 chip
- Supports Bluetooth Low Energy features & Standard Bluetooth on Windows VISTA/7
- Supports Standard Bluetooth Features on Windows XP
- Widcomm Software provided for operational use

4 System Requirements

Processor: Intel Celeron / Pentium III, IV; AMD Duron / Athlon

- Operating System: Microsoft Windows Vista or 7.
- System memory: 64MB at least
- Hard Drive Free Space: 250MB

5 Installation

5.1 Remove existing Bluetooth software

Please remove any previous version of Bluetooth software existing in your system before you start to install.

The remove procedures are as follows:

Step 1: Click Start/Settings, then select Control Panel.

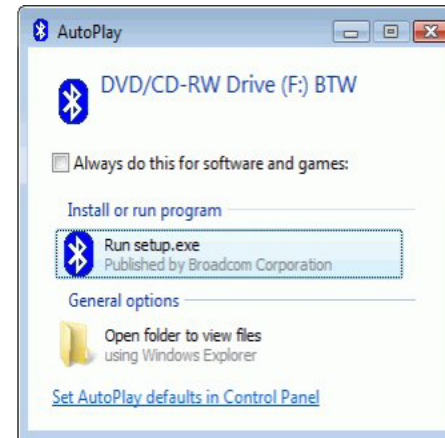
Step 2: In the Control Panel window, double click Add/Remove programs icon.

Step 3: Find out the WIDCOMM or other Bluetooth Software then remove it.

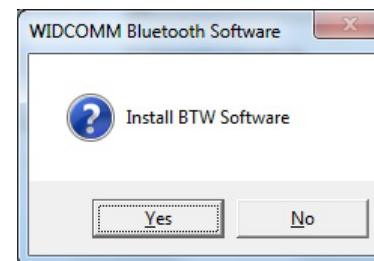
5.2 Installation on Windows 7

The following steps tell you how to install the WIDCOMM Bluetooth driver in Windows 7. Other Windows OS is similar procedures as Windows 7 installation below.

Step 1: Put WIDCOMM Driver CD into CD drive of your PC, an auto-installation program will start to guide you to complete the installation step by step.

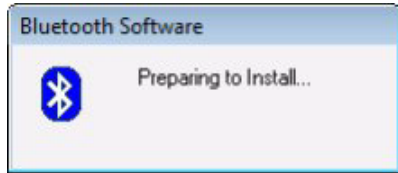


Step 2: Please click Yes to continue installation.



Step 3: Installation program will remind you to plug in the LM506 USB Adapter if you don't put it into your PC.

The reminder dialog box will not pop up if you already have plugged in the LM506 USB Adapter in your PC



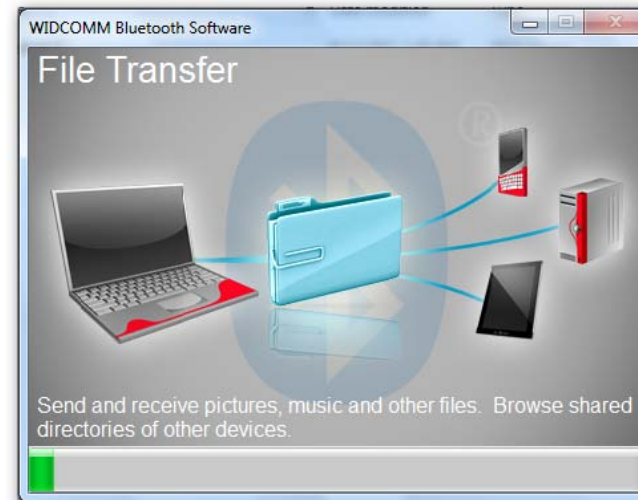
Step 4: Click **Agree and Install Bluetooth Software** to continue



Step 5: Please plug LM506 Bluetooth adapter and installation will start



Step 6: Installation in Progress



Step 7: Installation complete



6 FCC Warning Statement

This device complies with Part 15 of the FCC Rules. Operation is subject to the following two conditions:

- 1) This device may not cause harmful interference, and
- 2) This device must accept any interference received, including interference that may cause undesired operation

This equipment has been tested and found to comply with the limits for a class B digital device, pursuant to part 15 of the FCC Rules. These limits are designed to provide reasonable protection against harmful interference in a residential installation. This equipment generates, uses and can radiate radio frequency energy and, if not installed and used in accordance with

the instructions, may cause harmful interference to radio communications. However, there is no guarantee that interference will not occur in a particular installation. If this equipment does cause harmful interference to radio or television reception, which can be determined by turning the equipment off and on, the user is encouraged to try to correct the interference by one or more of the following measures:

- Reorient or relocate the receiving antenna.
- Increase the separation between the equipment and receiver.
- Connect the equipment into an outlet on a circuit different from that to which the receiver is connected.
- Consult the dealer or an experienced radio/TV technician for help.

Installation and use of this device must be in strict accordance with the instructions included in the user documentation provided with the product. Any changes or modifications (including the antennas) made to this device that are not expressly approved by the manufacturer may void the user's authority to operate the equipment. The manufacturer is not responsible for any radio or television interference caused by unauthorized modification of this device, or the substitution of the connecting cables and equipment other than manufacturer specified. It is the responsibility of the user to correct any interference caused by such unauthorized modification, substitution or attachment. Manufacturer and its authorized resellers or distributors will assume no liability for any damage or violation of government regulations arising from failing to comply with these guidelines.

This equipment complies with FCC radiation exposure limits set forth for an uncontrolled environment. This transmitter must not be co-located or operating in conjunction with any other antenna or transmitter.

7 Warranty and Disposal Notice

One (1) Year International warranty

Your LM506 Bluetooth USB Adapter is warranted for a period of one (1) year from the original date of purchase under the terms and conditions of this warranty. This warranty covers materials and manufacturing defects. LM Technologies Ltd will require proof of purchase before replacing the defective product.



Important Notice

DISPOSAL OF OLD ELECTRICAL AND ELECTRONIC EQUIPMENT

The symbol indicates that this product shall not be mixed with unsorted municipal waste when disposed of. There is separate collection system for waste electrical and electronic equipment. Usually old electrical and electronic equipment can be returned free of charge. For further information please contact the competent municipal authorities or shop where you purchased the product. Correct disposal ensures that waste electrical and electronic Equipment is recycled and reused appropriately. It helps avoid potential damage for the environment and human health and to preserve natural resources

8 Version History

Version	Date	Changes
v1.0	27/03/2012	First Version
v1.1	02/05/2012	1. Added FCC Warning statement 2. Added Version History